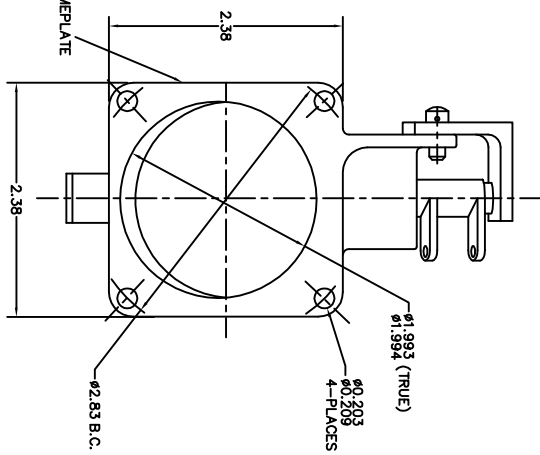
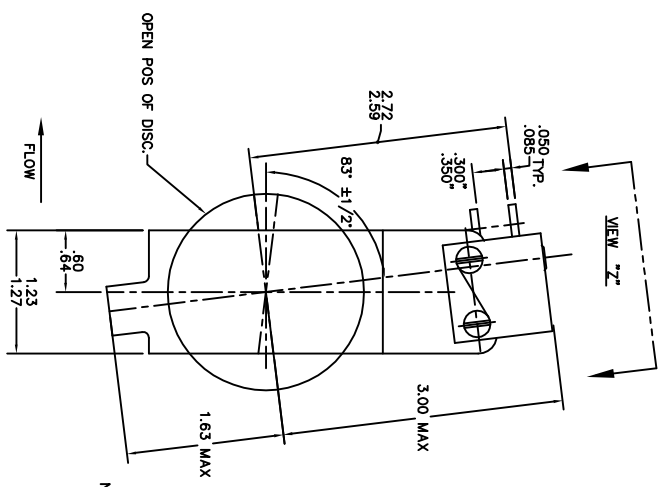
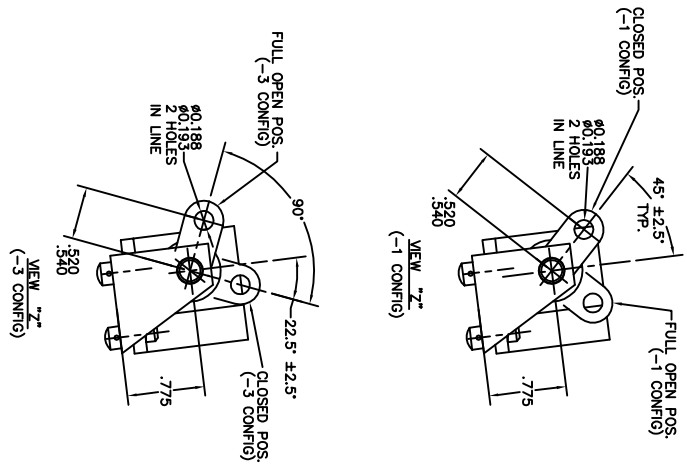


THIS DRAWING IS A PART OF A NOTICE - DISCLOSED AND ALL DESIGN, MANUFACTURING, REPRODUCTION, PATENT RIGHTS, AND TRADE MARKS ARE RESERVED BY AEROSPACE CONTROLS CORPORATION, WICHITA, KANSAS. IT IS SUBMITTED UNDER A CONFIDENTIAL, RESTRICTED FOR A SPECIFIC PURPOSE AND IS NOT TO BE REPRODUCED OR TRANSMITTED IN ANY FORM OR BY ANY MEANS, ELECTRONIC OR MECHANICAL, INCLUDING PHOTOCOPYING, RECORDING, OR BY ANY INFORMATION STORAGE AND RETRIEVAL SYSTEM, WITHOUT PERMISSION IN WRITING FROM AEROSPACE CONTROLS CORPORATION.



- NOTES: CONTD**
7. FLUID: ENGINE BLEED AIR
  8. TEMPERATURES  
AMBIENT: -65°F TO +250°F  
FLUID: 600°F MAX
  9. PRESSURES  
AMBIENT: SEA LEVEL TO 50,000 FT  
FLUID: 200 PSIG MAX OPER. 300 PSIG PROOF, 400 PSIG BURST
  10. LEAKAGE  
INTERNAL: .05 PPM MAX AT 130 PSIG  
EXTERNAL: .50 PPM MAX AT 130 PSIG
  11. TORQUE  
OPERATING TORQUE SHALL NOT EXCEED 25 IN LBS AT 65 PSIG INLET PRESSURE
  12. NAMEPLATE INFORMATION:  
AERO SPACE CONTROLS CORP.  
SHUTOFF VALVE P.N. 2431T100-1 OR -3  
SER. NO. DATE:  
CUSTOMER NO.

DASH NO.	NEXT ASSY.	USED ON	APPLICATION

QTY	ITEM SIZE	PART NUMBER	DESCRIPTION	MATERIAL	FINISH	FINISH SPEC
-3			SHUTOFF VALVE			
-1			SHUTOFF VALVE			

UNLESS OTHERWISE SPECIFIED	STANDARDS	DATE
1. DIMENSIONS ARE ANGLES IN FRACTIONS ± 1/161	ASME Y14.5	3-4-82
2. SURFACE ROUGHNESS PER MIL-STD-10	ASME Y14.3	
3. REMOVE BURRS & DEBUR	ASME Y14.4	
4. INTERNAL RADIUS .005 TO .015	ASME Y14.5	
5. STRAIGHTEN PER MIL-S-2742	ASME Y14.6	
6. TAPERED PER MIL-T-205	ASME Y14.7	

LIST OF MATERIALS	SCALE	UNIT	FINISH
	1:1	INCH	

TITLE	CODE IDENT NO.	SIZE	DWG NO.
AERO SPACE CONTROLS CORPORATION WICHITA, KANSAS			2431T100

REVISIONS	REV.	REVISION DESCRIPTION	DATE	APPD. BY
ASC266	A	Redrawn to show bracket	2-14-83	
ASC266	B	REMOVED EXCESS FLANGE	2-3-84	
72275	B	ADDED VIEW "Z" - RIGHT	6-7-85	
		HAND VIEW TOP TO DOC.		
		REV. A&B MADE @ ASC		
79203	D	ADDED -3 CONFIG TO VIEW Z	7-11-88	
		NOTE #8		
ECO 651	E	REDRAWN TO CAD	12-26-96	
		INCORPORATED ECO 594		
828	F	TO CORRECT NAMEPLATE LOCATION	3-7-98	D.S.
ASC1564	G	ADD VIEW "Z" (-3)	3-22-00	D.S.
		-3: IS 22.5° ± 2.5° WAS 43/47°		
		-1: IS 45° ± 2.5° WAS 43/47°		
ASC2160	H	IS .775 WAS .765	6-7-02	D.S.